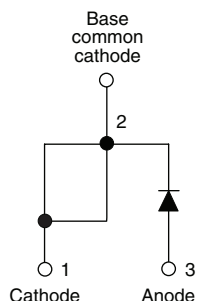


# HEXFRED® Ultrafast Soft Recovery Diode, 30 A



TO-247AC modified

## FEATURES

- Ultrafast recovery
- Ultrasoft recovery
- Very low  $I_{RRM}$
- Very low  $Q_{rr}$
- Guaranteed avalanche
- Specified at operating conditions
- Lead (Pb)-free
- Designed and qualified for industrial level



**RoHS\***  
COMPLIANT

## BENEFITS

- Reduced RFI and EMI
- Reduced power loss in diode and switching transistor
- Higher frequency operation
- Reduced snubbing
- Reduced parts count

## DESCRIPTION

HFA30PB120 is a state of the art center tap ultrafast recovery diode. Employing the latest in epitaxial construction and advanced processing techniques it features a superb combination of characteristics which result in performance which is unsurpassed by any rectifier previously available. With basic ratings of 1200 V and 30 A continuous current, the HFA30PB120 is especially well suited for use as the companion diode for IGBTs and MOSFETs. In addition to ultrafast recovery time, the HEXFRED® product line features extremely low values of peak recovery current ( $I_{RRM}$ ) and does not exhibit any tendency to “snap-off” during the  $t_b$  portion of recovery. The HEXFRED features combine to offer designers a rectifier with lower noise and significantly lower switching losses in both the diode and the switching transistor. These HEXFRED advantages can help to significantly reduce snubbing, component count and heatsink sizes. The HEXFRED HFA30PB120 is ideally suited for applications in power supplies and power conversion systems (such as inverters), motor drives, and many other similar applications where high speed, high efficiency is needed.

## PRODUCT SUMMARY

$V_R$	1200 V
$V_F$ at 30 A at 25 °C	4.1 V
$I_{F(AV)}$	30 A
$t_{rr}$ (typical)	47 ns
$T_J$ (maximum)	150 °C
$Q_{rr}$ (typical)	120 nC
$di_{(rec)M}/dt$ (typical) at 125 °C	240 A/μs
$I_{RRM}$ (typical)	4.7 A

## ABSOLUTE MAXIMUM RATINGS

PARAMETER	SYMBOL	TEST CONDITIONS	VALUES	UNITS
Cathode to anode voltage	$V_R$		1200	V
Maximum continuous forward current	$I_F$	$T_C = 100\text{ °C}$	30	A
Single pulse forward current	$I_{FSM}$		120	
Maximum repetitive forward current	$I_{FRM}$		90	
Maximum power dissipation	$P_D$	$T_C = 25\text{ °C}$	350	W
		$T_C = 100\text{ °C}$	140	
Operating junction and storage temperature range	$T_J, T_{Stg}$		- 55 to + 150	°C

\* Pb containing terminations are not RoHS compliant, exemptions may apply

ELECTRICAL SPECIFICATIONS (T <sub>J</sub> = 25 °C unless otherwise specified)							
PARAMETER	SYMBOL	TEST CONDITIONS		MIN.	TYP.	MAX.	UNITS
Cathode to anode breakdown voltage	V <sub>BR</sub>	I <sub>R</sub> = 100 μA		1200	-	-	V
Maximum forward voltage	V <sub>FM</sub>	I <sub>F</sub> = 30 A	See fig. 1	-	2.4	4.1	
		I <sub>F</sub> = 60 A		-	3.1	5.7	
		I <sub>F</sub> = 30 A, T <sub>J</sub> = 125 °C		-	2.3	4.0	
Maximum reverse leakage current	I <sub>RM</sub>	V <sub>R</sub> = V <sub>R</sub> rated	See fig. 2	-	1.3	40	μA
		T <sub>J</sub> = 125 °C, V <sub>R</sub> = 0.8 x V <sub>R</sub> rated		-	1.1	4000	
Junction capacitance	C <sub>T</sub>	V <sub>R</sub> = 200 V	See fig. 3	-	50	75	pF
Series inductance	L <sub>S</sub>	Measured lead to lead 5 mm from package body		-	8.0	-	nH

DYNAMIC RECOVERY CHARACTERISTICS (T <sub>J</sub> = 25 °C unless otherwise specified)							
PARAMETER	SYMBOL	TEST CONDITIONS		MIN.	TYP.	MAX.	UNITS
Reverse recovery time See fig. 5, 10	t <sub>rr</sub>	I <sub>F</sub> = 1.0 A, dI <sub>F</sub> /dt = 200 A/μs, V <sub>R</sub> = 30 V		-	47	-	ns
	t <sub>rr1</sub>	T <sub>J</sub> = 25 °C	I <sub>F</sub> = 30 A dI <sub>F</sub> /dt = 200 A/μs V <sub>R</sub> = 200 V	-	110	170	
	t <sub>rr2</sub>	T <sub>J</sub> = 125 °C		-	170	260	
Peak recovery current See fig. 6	I <sub>RRM1</sub>	T <sub>J</sub> = 25 °C		-	10	15	A
	I <sub>RRM2</sub>	T <sub>J</sub> = 125 °C		-	16	24	
Reverse recovery charge See fig. 7	Q <sub>rr1</sub>	T <sub>J</sub> = 25 °C		-	650	980	nC
	Q <sub>rr2</sub>	T <sub>J</sub> = 125 °C		-	1540	2310	
Peak rate of fall of recovery current during t <sub>b</sub> See fig. 8	dl <sub>(rec)M</sub> /dt1	T <sub>J</sub> = 25 °C		-	270	-	A/μs
	dl <sub>(rec)M</sub> /dt2	T <sub>J</sub> = 125 °C		-	240	-	

THERMAL - MECHANICAL SPECIFICATIONS						
PARAMETER	SYMBOL	TEST CONDITIONS	MIN.	TYP.	MAX.	UNITS
Lead temperature	T <sub>lead</sub>	0.063" from case (1.6 mm) for 10 s	-	-	300	°C
Thermal resistance, junction to case	R <sub>thJC</sub>		-	-	0.36	°C/W
Thermal resistance, junction to ambient	R <sub>thJA</sub>	Typical socket mount	-	-	80	
Thermal resistance, case to heatsink	R <sub>thCS</sub>	Mounting surface, flat, smooth and greased	-	0.50	-	
Weight			-	2.0	-	g
			-	0.07	-	oz.
Mounting torque			6.0 (5.0)	-	12 (10)	kgf · cm (lbf · in)
Marking device		Case style TO-247AC modified (JEDEC)	HFA30PB120			



HEXFRED®  
Ultrafast Soft Recovery Diode, 30 A

HFA30PB120PbF

Vishay High Power Products

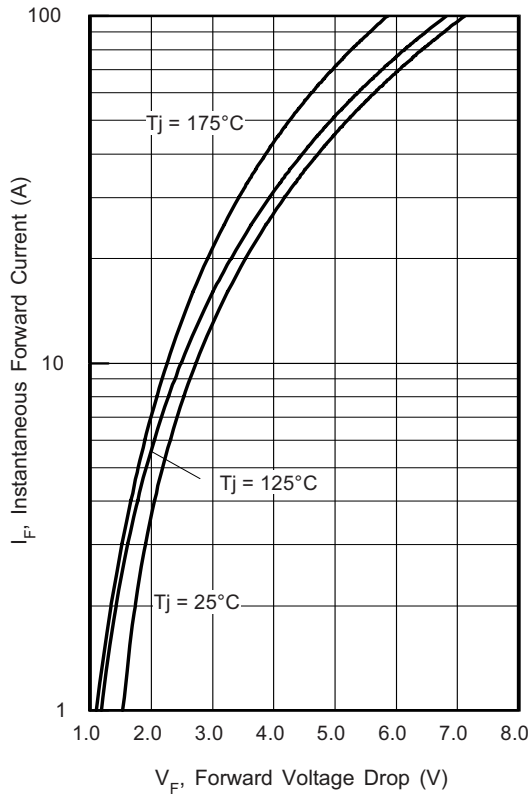


Fig. 1 - Typical Forward Voltage Drop vs. Instantaneous Forward Current

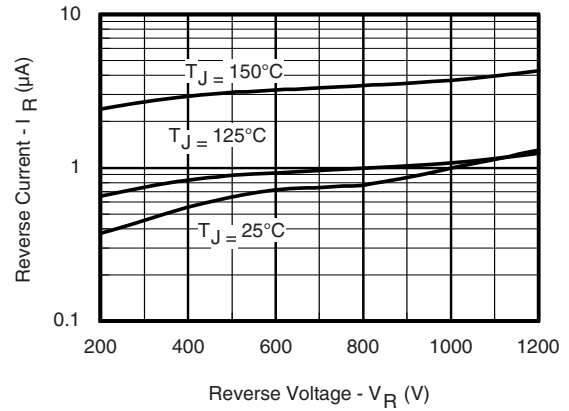


Fig. 2 - Typical Reverse Current vs. Reverse Voltage

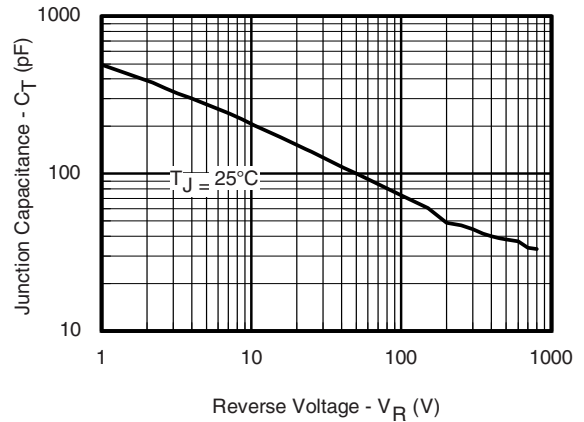


Fig. 3 - Typical Junction Capacitance vs. Reverse Voltage

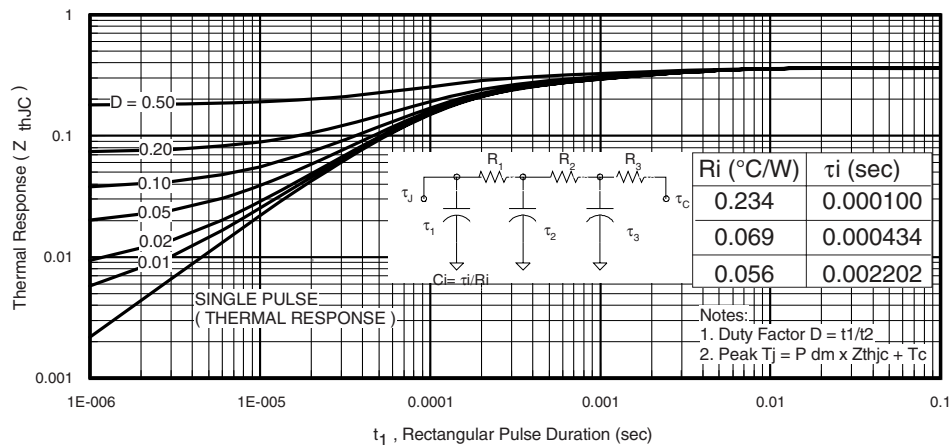
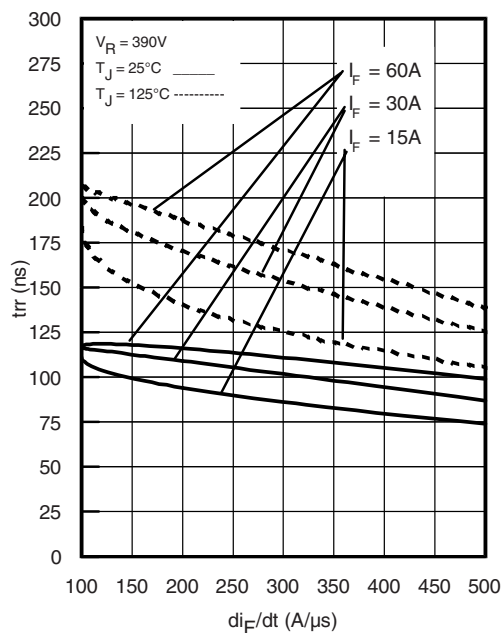
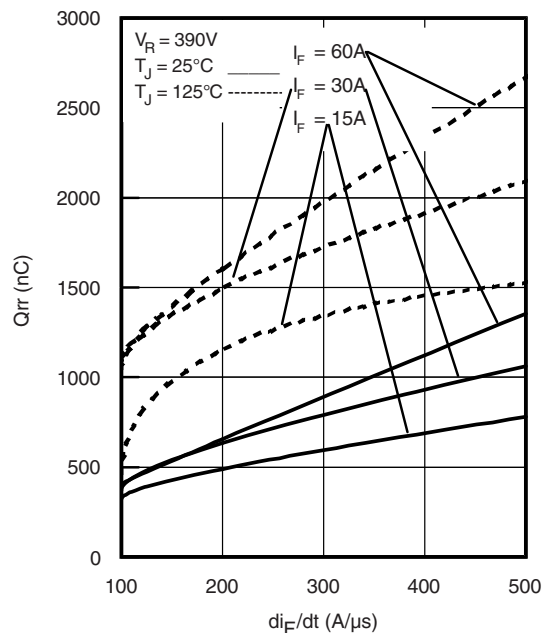
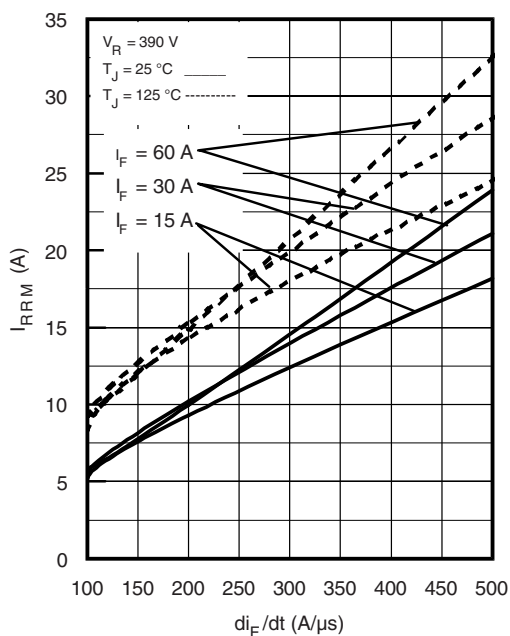
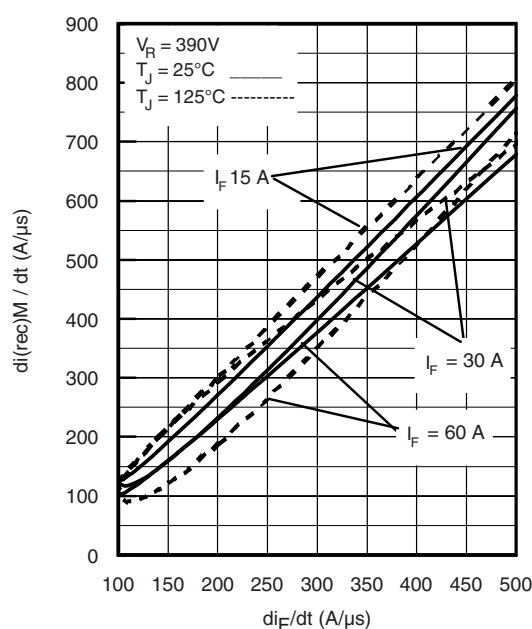


Fig. 4 - Maximum Thermal Impedance  $Z_{thJC}$  Characteristics

Fig. 5 - Typical Reverse Recovery Time vs.  $di_F/dt$  (Per Leg)Fig. 7 - Typical Stored Charge vs.  $di_F/dt$  (Per Leg)Fig. 6 - Typical Recovery Current vs.  $di_F/dt$  (Per Leg)Fig. 8 - Typical  $di_{(rec)M}/dt$  vs.  $di_F/dt$  (Per Leg)

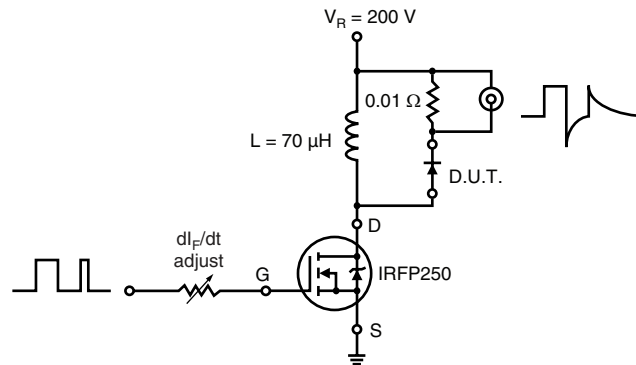
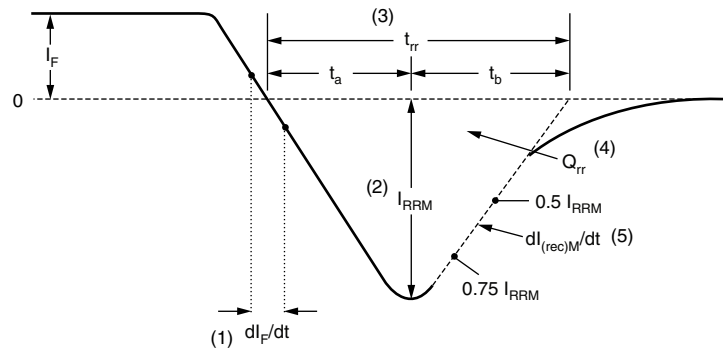


Fig. 9 - Reverse Recovery Parameter Test Circuit



(1)  $di_F/dt$  - rate of change of current through zero crossing

(2)  $I_{RRM}$  - peak reverse recovery current

(3)  $t_{rr}$  - reverse recovery time measured from zero crossing point of negative going  $I_F$  to point where a line passing through  $0.75 I_{RRM}$  and  $0.50 I_{RRM}$  extrapolated to zero current.

(4)  $Q_{rr}$  - area under curve defined by  $t_{rr}$  and  $I_{RRM}$

$$Q_{rr} = \frac{t_{rr} \times I_{RRM}}{2}$$

(5)  $di_{(rec)M}/dt$  - peak rate of change of current during  $t_b$  portion of  $t_{rr}$

Fig. 10 - Reverse Recovery Waveform and Definitions

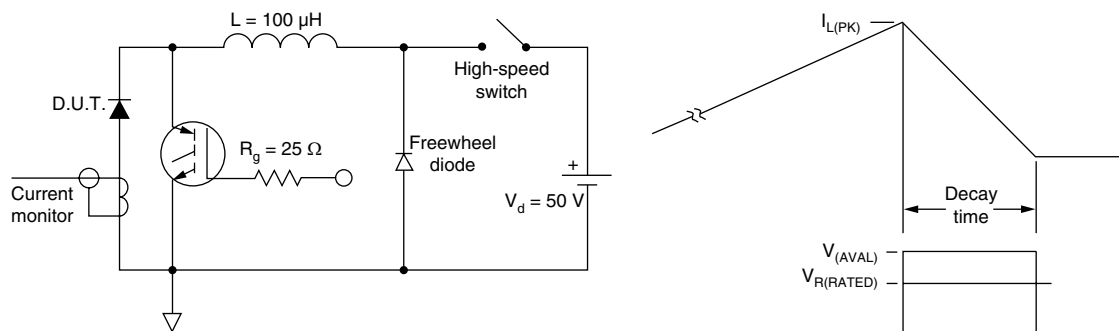


Fig. 11 - Avalanche Test Circuit and Waveforms

**ORDERING INFORMATION TABLE**

Device code	HF	A	30	PB	120	PbF
	1	2	3	4	5	6

- |   |   |  |
|---|---|--|
| 1 | - | HEXFRED® family  |
| 2 | - | Process designator: A = Electron irradiated<br>B = Platinum diffused   |
| 3 | - | Current rating (30 = 30 A)   |
| 4 | - | Package outline (PB = TO-247, 2 pins)  |
| 5 | - | Voltage rating (120 = 1200 V)  |
| 6 | - | <ul style="list-style-type: none"> <li>• None = Standard production</li> <li>• PbF = Lead (Pb)-free</li> </ul> |

LINKS TO RELATED DOCUMENTS	
Dimensions	<a href="http://www.vishay.com/doc?95253">http://www.vishay.com/doc?95253</a>
Part marking information	<a href="http://www.vishay.com/doc?95255">http://www.vishay.com/doc?95255</a>
SPICE model	<a href="http://www.vishay.com/doc?95358">http://www.vishay.com/doc?95358</a>



### Disclaimer

All product specifications and data are subject to change without notice.

Vishay Intertechnology, Inc., its affiliates, agents, and employees, and all persons acting on its or their behalf (collectively, "Vishay"), disclaim any and all liability for any errors, inaccuracies or incompleteness contained herein or in any other disclosure relating to any product.

Vishay disclaims any and all liability arising out of the use or application of any product described herein or of any information provided herein to the maximum extent permitted by law. The product specifications do not expand or otherwise modify Vishay's terms and conditions of purchase, including but not limited to the warranty expressed therein, which apply to these products.

No license, express or implied, by estoppel or otherwise, to any intellectual property rights is granted by this document or by any conduct of Vishay.

The products shown herein are not designed for use in medical, life-saving, or life-sustaining applications unless otherwise expressly indicated. Customers using or selling Vishay products not expressly indicated for use in such applications do so entirely at their own risk and agree to fully indemnify Vishay for any damages arising or resulting from such use or sale. Please contact authorized Vishay personnel to obtain written terms and conditions regarding products designed for such applications.

Product names and markings noted herein may be trademarks of their respective owners.